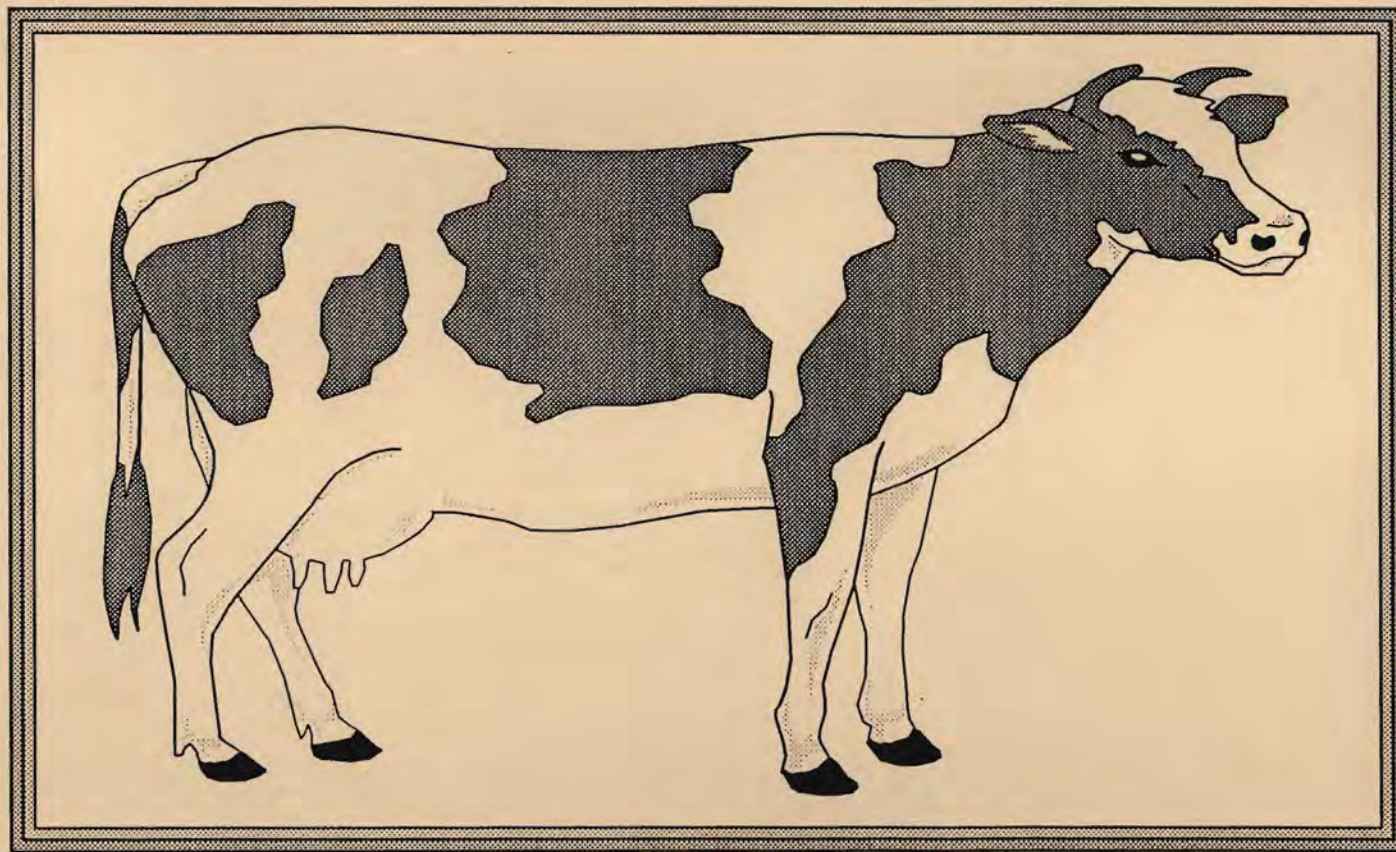


North East Association for Institutional Research

22nd Annual Conference

Comparative and Longitudinal Studies of Higher Education
Harvesting the Findings



Sheraton Burlington Hotel and Conference Center
Burlington, Vermont

October 28-31, 1995

North East Association for Institutional Research

1994-1995 NEAIR Officers

President: Marian Pagano, Associate Provost, Columbia University

President-Elect: Ellen Armstrong Kanarek, Program Director, Applied Educational Research, Inc.

Secretary: Phyllis Fitzpatrick, Director, Management Info, Fairfield University

Treasurer: Bayard Baylis, Associate Dean, Messiah College

Steering committee

1994-1995 Members-at-Large

Diane Cuneo, Director, IR, Smith College

Barbara Erdsneker, Assistant Director, IR, Bergen Community College

John Jacobsen, Data and Info Manager, PA State System of Higher Education

Michael McGuire (Past President), Director of Research, PICURC

Stuart Rich, Director, IR, Georgetown University

Brenda Bretz (Membership Secretary), Assistant Registrar, Dickinson College (Ex-officio)

Publications

1995 Chair

Anne Marie Delaney, Director, Program Research, Boston College

North East Association for Institutional Research - 22nd Conference Program

SATURDAY, OCTOBER 28, 1995		
1:30 - 3:30 PM	Registration	
2:00 - 5:00 PM Univ of Vermont Waterman 113Q	Mary Ann Coughlin Associate Prof. of Research & Stats Springfield College	Advanced Statistics for Institutional Research (Part 1) <i>Workshop</i> This workshop will deal with advanced issues in inferential statistics. Topics such as Analysis of Variance, Factor Analysis, Multivariate Regression, and Logit/Probit models will be covered and contrasted with other statistical tools and techniques. A case study approach will be used illustrating applications of these statistical techniques in institutional research. SPSS running on a PC will be used for this workshop.
2:00 - 5:00 PM Diamond Ballroom	J. Frederick Volkwein Director, IR SUNY-Albany	Managing a Program of Outcomes Assessment (Part 1) <i>Workshop</i> This workshop acquaints institutional researchers with the tools and processes for assessing campus educational outcomes. Participants will review the multiple purposes and uses of assessment, and will learn about various methodologies and instruments that are available and appropriate. Participants should bring copies of assessment plans and reports from their own institutions where possible.
6:00 - 7:00 PM Room 422 Presidential Suite	President's Reception	
SUNDAY, OCTOBER 29, 1995		
8:00 - 9:00 AM Promenade	Breakfast	

North East Association for Institutional Research - 22nd Conference Program

<p>October 29 9:00 - 12 noon Kingsland</p>	<p>Peter Balczunas Executive Assistant to the President Dickinson College</p>	<p>For the Planner with Many Hats: Strategic Planning for those New to the Field <i>Workshop</i></p> <p>Draws upon planning theory and the practical experiences of workshop participants to construct an "ideal" planning process. Participants will discuss what works and what doesn't and develop "best bet" strategies for achieving success in their particular institutional settings. Among topics discussed will be the role of the planner as change agent, the importance of the IR function in the planning process, and the effective use of external consultants.</p>
<p>9:00 - 12 noon Shelburne</p>	<p>Rosalinda Graham Senior Institutional Research Analyst University of Delaware</p>	<p>Conducting a Salary Equity Study <i>Workshop</i></p> <p>A critical component of good and effective salary administration is the capacity to ensure that salary differentials can be explained by both quantitative and qualitative measures. The workshop will provide a practical guide on how to conduct a salary equity study and how to develop proposals for salary adjustment within fixed budget constraints. Emphasis is given on the methodology and guidelines rather than the technical aspects of the statistical analysis.</p>
<p>1:00-2:30 PM Emerald I and II</p>	<p style="text-align: center;">William G. Bowen President Andrew W. Mellon Foundation <i>Keynote Session</i></p>	

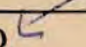
North East Association for Institutional Research - 22nd Conference Program

MONDAY, OCTOBER 30, 1995		
7:30 - 9:00 AM Emerald I and II		Breakfast Sponsored by "Scanning Products"
7:30 - 8:45 AM Willsboro	Michael Middaugh Director, IR & Plng University of Delaware	National Study of Institutional Costs and Productivity <i>Special Interest Group</i> Michael has just received a federal grant to continue his work examining instruction costs and productivity by academic discipline. This SIG is for those who have participated in the national study in previous years and for those who are interested in learning more about the study.
7:50 - 8:45 AM Valcour	Kathy Kern Bowman Research Associate COFHE Larry Litten Director of Research COFHE	COFHE Senior Surveys <i>Special Interest Group</i> A chance for COFHE schools interested in the Senior Survey to share ideas and concerns.

North East Association for Institutional Research - 22nd Conference Program

October 30 10:00 - 10:55 AM Emerald II	Fred Cohen Director Enrollment Research & Analysis New York University	<p style="text-align: center;">Student Satisfaction and Persistence: Some Early Findings at One Institution</p> <p style="text-align: center;"><i>Paper</i></p> <p>New York University conducted a student satisfaction survey of its freshmen and juniors in Spring 1994. The results of this survey have been correlated with student enrollment behavior. This paper will present findings from the analysis of the survey and enrollment activities which suggest that some student attitudes are associated with student persistence.</p>
10:00 - 10:55 AM Emerald I	Charles Secolsky Research Associate, IR Rockland Community College	<p style="text-align: center;">The Use of Placement Test Scores and Other Enrollment Data in Identifying Potential Early Leavers from Community College</p> <p style="text-align: center;"><i>Workshare</i></p> <p>Many colleges use SAT scores for admission and as part of a set of variables for predicting retention. At many community colleges placement test scores are used instead. This study used placement test scores, grade-point average, number of credits completed and enrollment status as predictors of retention with the goal of identifying potential early leavers.</p>
10:00 - 10:55 AM Amphitheater	Steve Brooks President S.H. Brooks, Inc.	<p style="text-align: center;">Econometric Modeling of Enrollment Behavior and Optimization of Financial Aid Budgets</p> <p style="text-align: center;"><i>Paper</i></p> <p>The process of using an institution's admissions and financial aid data to build customized econometric models of enrollment probabilities will be described. Uses of data acquisition and verification, model estimation, validation and simulation and alternative approaches to enrollment prediction will be discussed.</p>

North East Association for Institutional Research - 22nd Conference Program

<p>October 30 11:30 AM - 12:25 PM Diamond II</p>	<p>Robert J. Heffernan, Ph.D.  Associate Director, IR Rutgers University</p> <p>Tina Grycenkov Information Manager Rutgers University</p> <p>Marie Paulette Matis IR Staff Rutgers University</p> <p>Joan Spivak IR Staff Rutgers University</p>	<p style="text-align: center;">Event History Analysis in the Study of Student Attrition <i>Workshare</i></p> <p>A current study of attrition at Rutgers University is building models of student careers that will allow: the identification of students that are most at risk of leaving college and the timing of withdrawal from school; the detection of differences among these risk profiles for various categories of students; and the evaluation of particular intervention strategies presently at use at Rutgers to ascertain their impact on preventing students from dropping out.</p>
<p>11:30 AM - 12:25 PM Amphitheater</p>	<p>Dr. Anne Marie Delaney Director of Program Research Boston College</p>	<p style="text-align: center;">Comparative Perspectives on the Role of Institutional Research: Variation by Institutional Characteristics <i>Paper</i></p> <p>Based on a survey of 243 New England colleges and universities, this paper presents results from bivariate and multivariate analyses showing the relationships among the following: institutional characteristics, the nature of the institutional research function and the kind of research performed, the contribution of institutional research to decision making, the vision for the role of institutional research and the estimated resources required fulfill this vision.</p>

North East Association for Institutional Research - 22nd Conference Program

<p>October 30 1:30 - 2:25 PM Amphitheater</p>	<p>Craig A. Clagett Director, IR & Analysis Prince George's Community College</p> <p>Karl Boughan Supervisor of IR Prince George's Community College</p>	<p>A Student Outcomes Typology for Community Colleges: Identifying Achievers with Longitudinal Cohort Analysis <i>Paper</i></p> <p>Development of a longitudinal student tracking system facilitated creation of an outcomes typology useful for both external accountability and internal decision support. Logistic regression and discriminant function analysis were used to identify correlates of student achievement.</p>
<p>1:30 - 2:25 PM Emerald I</p>	<p>Larry Litten Director of Research COFHE</p> <p>Stuart Rich Director, IR Georgetown</p>	<p>Freshmen Self-Image at Highly Selective Institutions <i>Paper</i></p> <p>COFHE has American Freshmen Survey data from 22 selective private institutions (over 10,000 students). This paper will examine the personal and situational variables that are associated with how freshmen at these institutions rate themselves, relative to their peers, in the following areas: intellectual ability, intellectual self-confidence, social self-confidence, and emotional health. Early results have revealed some interesting effects. SAT scores and high school GPA correlate with self-ratings of intellectual ability at about the same level that the College Board reports they correlate with freshman GPA; the strongest correlate with self-ratings of popularity is self-rating of physical appearance.</p>

North East Association for Institutional Research - 22nd Conference Program

October 30 2:30 - 3:25 PM Diamond II Oct 31 10:30	Keith J. Guerin Director, IR & Plng County College of Morris	Constructing Longitudinal Models for Retention Research and Enrollment Projections: SAS Programming Tips <i>Recitation</i> With the move to desktop computing, institutional data is frequently accessible only through ASCII file extracts supplied by a campus computing center. This recitation provides researchers with the tools for conducting longitudinal studies using SAS PROGRAMMING.
2:30 - 3:25 PM Amphitheater	Kelly Long Graduate Student Springfield College	Withdrawn Students: Characteristics and Descriptors <i>Paper</i> Ms. Long will present the results of a survey administered at Springfield College describing the characteristics of withdrawn students.
2:30 - 3:25 PM Emerald I	Kathleen Kern Bowman Research Associate COFHE	Student Activities and Satisfaction: The COFHE Survey of the Class of '94 <i>Paper</i> This analysis of COFHE senior survey data from the Class of 1994 will relate how students' activities influence their satisfaction with various aspects of campus life.
2:30 - 3:25 PM Emerald II	Jack Dunn Happily Provisionally Retired	Institutional Strategy: A President's Perspective <i>Paper</i> An overview of institutional processes, situations, and options a president has for helping move an institution in the desired direction will be presented. In addition, one president's perspective on the IR role in understanding and assisting in that process will be put forward.

North East Association for Institutional Research - 22nd Conference Program

<p>4:00 - 4:55 PM Amphitheater</p>	<p>Rena Cheskis-Gold Sr. Research Analyst Yale University</p>	<p style="text-align: center;">Family Leave Policies for Faculty <i>Paper</i></p> <p>With more and more tenure track faculty living in dual-income households, family related issues such as childcare and elder care have taken on increased importance in recent years. In this paper Ms. Cheskis-Gold will present a typology for analyzing family leave policies, describe the current policies at a set of select institutions, and relate the processes via which the needed data were collected.</p>
<p>4:00 - 4:55 PM Emerald I</p>	<p>James Shulman Andrew W. Mellon Foundation</p>	<p style="text-align: center;">College and Beyond: First Findings <i>Paper</i></p> <p>The Andrew W. Mellon Foundation is in the process of conducting a major study which will document both the long-term benefits of higher education for students as well as recent structural changes in higher education itself. The study includes data from incoming classes of 1951, 1976, and 1989. In this paper Dr. Shulman will present initial findings from the study.</p>

North East Association for Institutional Research - 22nd Conference Program

October 30 5:00 - 5:55 PM Amphitheater	Glen Lum, Ph.D. Director, IR Harrisburg Area Community College Mariane Guidos Educational Data Specialist Harrisburg Area Community College	Development of a Computerized Student Tracking System at Harrisburg Area Community College <i>Workshare</i> The presenters will discuss the history of the development of the tracking system at Harrisburg Area Community College, the preparation of the tracking model, the structure of the tracking system, and the planned use of the tracking data.
5:00 - 5:55 PM Emerald I	William H. Freund Director, Technology Programs NCES	NCES Technology -SQL Databases on the Internet <i>Workshare</i> NCES is in the process of placing IPEDS data into a SQL database for access via the Internet. However, there are questions about the structure of the data tables and which IPEDS data elements should be loaded. This Workshare will analyze these issues and help guide the Center's efforts.
TUESDAY, OCTOBER 31, 1995		
7:30 - 9:00 AM Emerald III	Breakfast (All Breakfast SIGS and Table Topics will be in Emerald III)	
8:00- 8:55 AM Emerald III	John P. Jacobsen Data and Information Manager PA State System of Higher Education	How to Respond to Excessive Legislative Requests <i>Table Topic</i> When a legislator asks for information that will be used to your institution's detriment how does one respond? A few ideas to soften the blow.

North East Association for Institutional Research - 22nd Conference Program

October 31 9:00 - 9:55 AM Emerald II	Michael Middaugh Director, IR & Plng University of Delaware	National Study of Institutional Costs and Productivity: First Findings <i>Paper</i> For the past several years Mike Middaugh has been conducting a multi-institutional study of instructional costs by academic discipline. In this session research findings from that work will be presented. Mike has just received a federal grant to continue this work .
9:00 - 9:55AM Amphitheater	Bette Johnson Associate Director, Admissions MIT	Predicting Major <i>Workshare</i> Data will be presented about a recent graduating class that includes intended major, actual major, and work done to predict actual from intended. The great increase in pre-med interest is a stimulus for this research.
9:00 - 9:55 AM Diamond II	Fred Cohen Director Enrollment Research & Analysis New York University	Another New Way to ScanSurveys: No Number 2 Pencils and No Expensive Scanner Needed -or- How is the NEAIR Conference Evaluation Tabulated? <i>Workshare</i> There are many optical scanners as well as packages to create forms to be used with the scanners. New York University has begun using software which requires only a general purpose scanner to read forms. It has the added benefit of allowing forms to be created in any word processor or graphics program and to be filled out with any writing implement.

North East Association for Institutional Research - 22nd Conference Program

<p>October 31 10:30 - 11:25 AM Amphitheater</p>	<p>Helen S. Kerr Director, Research & Analysis Maryland Independent College and University Association</p> <p>Craig A. Clagett Director, IR & Analysis Prince George's Community College</p>	<p style="text-align: center;">Defining and Exceeding Campus Expectations for Institutional Research <i>Paper</i></p> <p>This paper identifies what an institution should expect from its IR office. In addition, the question of what an IR office should expect from its institution will be addressed. The session will conclude with the presentation of a performance monitoring system for the assessment and continuous improvement of institutional research.</p>
<p>10:30 - 11:25 AM Emerald I</p>	<p>Kathleen Kennan Director, IR Massachusetts College of Art</p> <p>Rhonda Gabovitch Director, IR Massosoit Community College</p>	<p style="text-align: center;">Evaluating the Impact of a Freshman Seminar Program on Student Development and Retention <i>Paper</i></p> <p>A freshman seminar course, designed to assist first semester students' adjustment to college and to improve retention, was evaluated over a four year period. Significant impact was found on students' knowledge of campus resources, learning skills, use of support services, career planning, and retention to the second semester.</p>